

AGREEMENT
BETWEEN THE
UNITED ASSOCIATION
of Journeymen and
Apprentices of the
Plumbing and Pipe Fitting
Industry of the United
States and Canada, A.F.L.-C.I.O.
and the
SHEET METAL WORKERS'
INTERNATIONAL
ASSOCIATION
August 31, 1956

SM-1

UNITED ASSOCIATION
of Journeymen and Apprentices of the
Plumbing and Pipe Fitting Industry
of the United States and Canada,
A.F.L.-C.I.O.
Washington 6, D.C.

September 5, 1956

Subj: Interim National Agreement between the United Association of Journeymen and Apprentices of the Plumbing and Pipe Fitting Industry of the United States and Canada and the Sheet Metal Workers' International Association, covering the unloading, handling and installing of "Cooling, Heating and Air Conditioning Units" --. "Room

Radiators and Enclosures",---" Kitchen Equipment"
and mutual cooperation.

**TO ALL GENERAL VICE PRESIDENTS, GENERAL ORGANIZERS, SPECIAL REPRESENTATIVES AND
BUSINESS AGENTS OF LOCAL UNIONS OF**

THE UNITED ASSOCIATION

Dear Sirs and Brothers:

We are pleased to inform you that the General Officers of the United Association and the Sheet Metal Workers' International Association have renewed efforts to settle questions of a jurisdictional nature between these two International Unions. As you know, these efforts commenced several years ago, but were discontinued and committees representing both organizations have not met for this purpose for some time. During the past several months (upon request of the National Joint Board for the Settlement Of Jurisdictional Disputes) the General Officers of the United Association have renewed discussions with the General Officers of the Sheet

SM-2

Metal Workers' International with the hope of resolving our differences pertaining to the unloading, handling and installing of the various equipment mentioned above. Mr. John Dunlop, Chairman of the National Joint Board attended and monitored these meetings.

At the last meeting held in Washington, D.C. on August 31, 1956 which was attended by the General Presidents and General Secretary-Treasurers of both International Unions along with the Assistant General President of the United Association and Mr. John Dunlop, Chairman of the National Joint Board, the attached Interim National Agreement between our two international unions was duly signed by the respective General Officers.

It is also agreed at the time of signing this agreement that no disputes which might occur between our respective affiliated Local Unions will be sent to the National Joint Board for the Settlement of Jurisdictional Disputes, Building and Construction Industry, and the officers of both International Unions agree that all disputes which might arise between our respective organizations shall be handled on the local level in keeping with the terms of the Interim National Agreement, and all interpretations that may be required covering any part of the agreement will be made by the General Officers of our respective organizations.

Further, any disputes covering work not set out in the Interim National Agreement will be handled in the following manner: The first attempt to be made by the Local Union representatives in the area, and upon failure to resolve the disputed work question the matter will then be referred to an International Representative of each organization, and upon failure of their settling the work in question the entire matter will be referred to the General Officers signatory to the Interim National Agreement.

In conclusion, we are confident that the working relationship between our memberships will be greatly benefitted, and of equal, if not greater importance, our bargaining position with employers in the industry will be greatly strengthened.

We pledge ourselves to carry out the full intent and purpose of this agreement and to call upon our membership, representatives and officers to approach **this** task as a unified force that will ultimately succeed in organizing every eligible member into our respective organizations.

SM-3

With kindness and best wishes, we remain

Fraternally yours,

/s/ Robt Byron

General President

Sheet Metal Workers' International Association

/s/ Peter T. Schoemann

General President,
United Association of Journeymen and Apprentices of the Plumbing and Pipe Fitting Industry
of the United States and Canada

**SHEET METAL WORKERS'
INTERNATIONAL ASSOCIATION**

Washington 6, D.C.

September 5, 1956

Subj: Interim National Agreement between the Sheet Metal Workers' International Association and the United - Association of Journeymen and Apprentices of the Plumbing and Pipe Fitting Industry of the United States and Canada covering the unloading, handling and installing of "Cooling, Heating and Air Conditioning Units", "Room Radiators and Enclosures", "Kitchen Equipment" and mutual cooperation.

**TO ALL GENERAL VICE PRESIDENTS, GENERAL
ORGANIZERS, SPECIAL REPRESENTATIVES AND
BUSINESS AGENTS OF LOCAL UNIONS OF
THE SHEET METAL WORKERS' INTERNATIONAL
ASSOCIATION**

Dear Sirs and Brothers:

We are pleased to inform you that the General Officers of the Sheet Metal Workers' International Association and the United Association have renewed efforts to settle questions of a jurisdictional nature between these two International Unions. As you know, these efforts commenced several

SM-4

years ago, but were discontinued and committees representing both organizations have not met for this purpose for some time. During the past several months (upon request of the National Joint Board for the Settlement of

Jurisdictional Disputes) the General Officers of the Sheet Metal Workers' international have renewed discussions with the General Officers of the United Association with the hope of resolving our differences pertaining to the unloading, handling and installing of the various equipment mentioned above. Mr. John Dunlop, Chairman of the National Joint Board, attended and monitored these meetings.

At the last meeting held in Washington, D.C. on August 31, 1956 which was attended by the General Presidents and General Secretary-Treasurers of both International Unions along with the Assistant General President of the United Association and Mr. John Dunlop, Chairman of the National Joint Board, the attached Interim National Agreement between our two international unions was duly signed by the respective General Officers.

It is also agreed at the time of signing this agreement that no disputes which might occur between our respective affiliated Local Unions will be sent to the National Joint Board for the Settlement of Jurisdictional Disputes, Building and Construction Industry, and the officers of both International Unions agree that all disputes which might arise between our respective organizations shall be handled on the local level in keeping with the terms of the Interim National Agreement, and all interpretations that may be required covering any part of the agreement will be made by the General Officers of our respective organizations.

Further, any disputes covering work not set out in the Interim National Agreement will be handled in the following manner: The first attempt to be made by the Local Union representatives in the area, and upon failure to resolve the disputed work question the matter will then be referred to an International Representative of each organization; and upon failure of their settling the work in question the entire matter will be referred to the General Officers signatory to the Interim National Agreement.

In conclusion, we are confident that the working relationship between our memberships will be greatly benefitted, and of equal, if not greater importance, our bargaining position with employers in the industry will be greatly strengthened.

SM-5

We pledge ourselves to carry out the full intent and purpose of this agreement and to call upon our membership, representatives and officers to approach this task as a unified force that will ultimately succeed in organizing every eligible member into our respective organizations.

With kindness and best wishes, we remain

Fraternally yours,

/s/ PETER T. SCHOEMANN

General President,

United Association of Journeymen and Apprentices of the Plumbing and Pipe Fitting Industry of the United States and Canada

/s/ ROBT BYRON

General President.

Sheet Metal Workers' International Association

August 31, 1956

INTERM NATIONAL AGREEMENT

between the

UNITED ASSOCIATION

OF JOURNEYMEN AND

APPRENTICES of the

PLUMING AND PIPE

and the

SHEET METAL WORKERS'

INTERNATIONAL ASSOCIATION

It is the purpose of this interim agreement to improve relations between the two organizations, eliminate work stoppages, to settle jurisdictional disputes directly between the two organizations, and mutually to assist each union to secure work coming within their recognized jurisdiction.

It is understood that this interim agreement shall not relate to or have any bearing on jurisdictional disputes that may occur between either of the parties to this agreement and any other international union or subordinate body thereof.

It is understood that any adjustment made under the terms of this interim agreement shall not prejudice the jurisdictional claims of either international union.

SM-6

ARTICLE I- Cooling, Heating and

Air Conditioning Units

(1) a. The installation of gas or oil unit heaters for heating purposes only, not in connection with a duct system, shall be the work of the United Association.

b. The installation of gas or oil unit heaters for heating purposes only, in connection with duct systems, shall be the work of the Sheet Metal Workers International Association.

c. The installation of warm air furnaces shall be installed by members of the Sheet Metal Workers International Association.

2) The installation of completed and/or knock-down package type heating and cooling units consisting of fans, filters, refrigeration condensing units, and dampers, with heating coils and/or cooling coils assembled therein, whether or not in connection with a duct system, shall be unloaded and installed by a composite crew consisting of an equal number of members of the Sheet Metal Workers International Association and the United Association of Journeymen and Apprentices of the Plumbing and Pipe Fitting Industry, with the understanding that the members of the Sheet Metal Workers International Association shall install any duct work in connection with the unit and members of the United Association of Journeymen and Apprentices of the Plumbing and Pipe Fitting Industry shall install all piping in connection with the units.

(3) The installation of self-contained window units which ordinarily set in the windows of commercial or residential

buildings, of which Philco and Mitchell are typical, are not covered by paragraph 2 above, and shall be installed by members of the United Association of Journeymen and Apprentices of the Plumbing and Pipe Fitting Industry.

(4) The installation of Carrier-Weathermasterter High Velocity Units or similar units shall be performed as follows: The unloading, handling and setting of the plenum chamber and/or wind box is the work of members of the Sheet Metal Workers including the installation of the flexible tubing or duct connection to

SM-7

the plenum chamber or wind box. The unloading, handling and setting of the coil section is the work of members of the United Association including all pipe work in connection with this type of unit. If such units are shipped to the job as a complete unit which includes the coil which cannot be separated from the plenum chamber or wind box, the unloading, handling and intallation shall be performed by it composite crew consisting of an equal number of members of the Sheet Metal Workers and the United Association, with the understanding that members of the Sheet Metal Workers shall install the duct work in connection with the unit and members of the United Association shall install all piping in connection with these units.

(5) Combination Room Cabinets for Heating or Cooling: The installation of room cabinet heating and/or cooling units which also provide ventilation through a fresh air inlet from outside for a single room and are not part of a duct system shall be the work of the United Association to unload, handle and install. (The Trane Company "Uni-Trane" unit is Illustrative). If the same unit is a part of a duct system the unloading, handling and setting of the unit shall be performed by a composite crew consisting of an equal number of members of the Sheet Metal Workers and the United Association.

(6) Where the booster coil is hung separately from the duct work, the Installation of the booster coil is the work of members of the United Association. Where the booster coil is inserted in the duct work, and not supported separately, the installation of the booster coil is the work of members of the Sheet Metal Workers. The installation of free-standing cogs, regardless of whether they are built within a sheet metal housing, is the work of members of the United Association.

ARTICLE II -Room Radiators and Enclosures for Heating Purposes Only

(1) The installation of all room radiators, convectors and fin-type radiators when enclosures are made to fit the radiator or convector and shipped to the job as a manufactured unit shall be handled, unloaded and installed in their entirety by members of the United Association. An exception shall apply when an

SM-8

enclosure is made up and installed to cover space beyond the convector radiator, or used or installed beyond the cover of the manufactured convector unit to fill out a space between the end of the window bay and the radiator enclosure, in which case the handling, unloading and installation of such enclosure shall be the work of members of the Sheet Metal Workers. When an enclosure is specially fabricated and not shipped to the job as a manufactured unit, the installation of such enclosure shall be installed by members of the Sheet Metal Workers.

(2) The installation of room cabinet heating units only which also provide ventilation through a fresh-air inlet from outside for a single room shall be the work of members of the United Association to unload, handle and install. (The Herman-Nelson and Nesbitt schoolroom units are illustrative.) The unloading, handling and installation of the cabinets and book cases in connection with these types of units shall be. installed by members of the Sheet Metal Workers.

(3) The final installation of all enclosures for Carrier Weathermaster High Velocity Units or similar units shall be installed in their entirety by members of the Sheet Metal Workers International Association.

ARTICLE III-Kitchen Equipment

(1) The unloading and distribution of kitchen equipment to the room in which it is to be set shall be performed by a composite crew of equal numbers of members of the Sheet Metal Workers and members of the United Association.

(2) The setting of kitchen equipment with no piping connections shall be set by members of the Sheet Metal Workers. The setting of kitchen equipment which has piping connections and which is free standing shall be set by members of the United Association, except steam tables and salad tables, which shall be performed by members of the Sheet Metal Workers. The setting of kitchen equipment which has piping connections and which is cut, fitted or welded and is set in line shall be set by members of the Sheet Metal Workers.

SM-9

(3) The installation of piping connections shall be performed by members of the United Association.

(4) The welding and cutting, fitting and other sheet metal work shall be performed by members of the Sheet Metal Workers.

(5) The fabrication of kitchen equipment is the work of members of the Sheet Metal Workers. The installation and fabrication of pipe work within the kitchen equipment shall be the work of members of the United Association.

(6) The fabrication and assembling of kitchen equipment and the installation of pipe work therein, shall be performed by an employer under an agreement with these organizations.

ARTICLE IV

(1) In cases where composite crews are required under the terms of this interim agreement, both parties agree to furnish their members to the contractor who has the installation contract under the prevailing wages and conditions of the area.

Sheet Metal Workers International Association

/s/ Robt Byron

United Association of Journeymen & Apprentices of the Plumbing & Pipe Fitting Industry of the United States and Canada

/s/ Peter T, Schoemann

General President General President

/s/ Edward Carlough Isl John J. McCartin

General Secretary-Treasurer Assistant General President

SM-10

September 30, 1958

**TO ALL GENERAL VICE PRESIDENTS, GENERAL
ORGANIZERS, SPECIAL REPRESENTATIVES,
FINANCIAL SECRETARIES AND BUSINESS
MANAGERS OF LOCAL UNIONS OF THE
UNITED ASSOCIATION**

Dear Sirs and Brothers:

Following the joint announcement of an agreement between the Sheet Metal Workers' International Association and the United Association of Journeymen and Apprentices of the Plumbing and Pipe Fitting Industry of the United States and Canada a number of disputes arose in various parts of the United States and Canada over the proper interpretation of Paragraph (1) Article II of the Agreement.

Enclosed please find three drawings which illustrate the common types of disputes and the correct interpretation as agreed to by General Secretary-Treasurer Carlough of the Sheet Metal Workers' International Association and John J. McCartin, Assistant General President of the United Association of Journeymen and Apprentices of the Plumbing and Pipe Fitting Industry of the United States and Canada.

Trusting these drawings will assist you in eliminating friction and disputes with the Sheet Metal Workers, I am

Fraternaly yours,

/s/ PETER T. SCHOEMANN

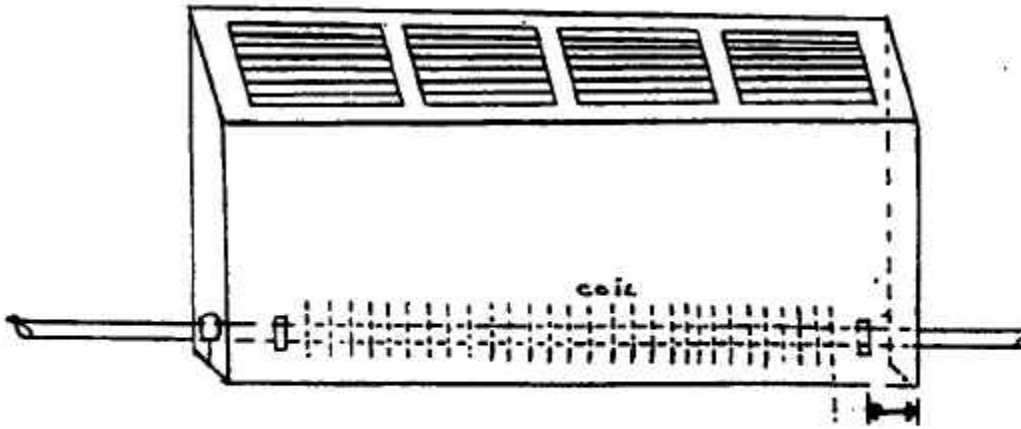
General President, U.A.

AGREED IN ACCORDANCE WITH UNDERSTANDING OF JANUARY 7, 1958, CLARIFYING SECTION I, ARTICLE II, OF THE SHEET METAL WORKERS/UNITED ASSOCIATION AGREEMENT OF AUGUST 31, 1956:

By, John J. McCaskey
FOR THE UNITED ASSOCIATION OF JOURNEYMEN
& APPRENTICES OF THE PLUMBING & PIPE-
FITTING INDUSTRY

By, Edward Carlough
FOR THE SHEET METAL WORKERS INTERNATIONAL
ASSOCIATION

CONVECTOR COVERS
(ONE SECTION)



under 8" = U.A.
8" or over = S.M.W. Metal Workers

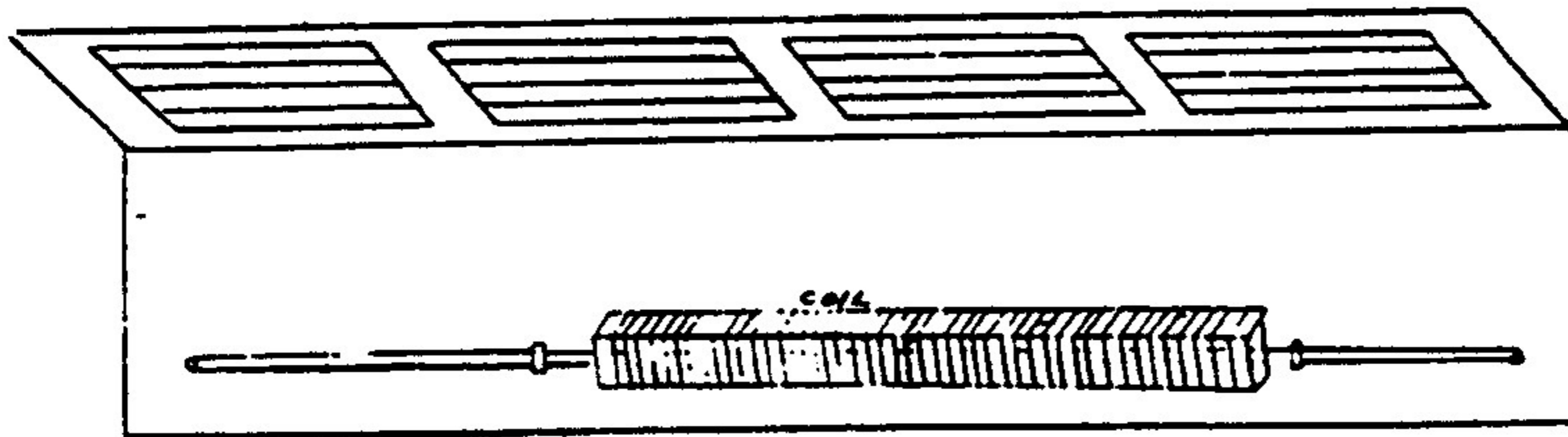
AMENDED IN ACCORDANCE WITH UNDERSTANDING OF JANUARY 7, 1955, CLARIFYING SECTION 1, ARTICLE 11, OF THE SHEET METAL WORKERS/UNITED ASSOCIATION AGREEMENT OF AUGUST 31, 1936:

By: John J. McCarthine
FOR THE UNITED ASSOCIATION OF JOURNEYMEN
& APPRENTICES OF THE PLUMBING & PIPE-
FITTING INDUSTRY

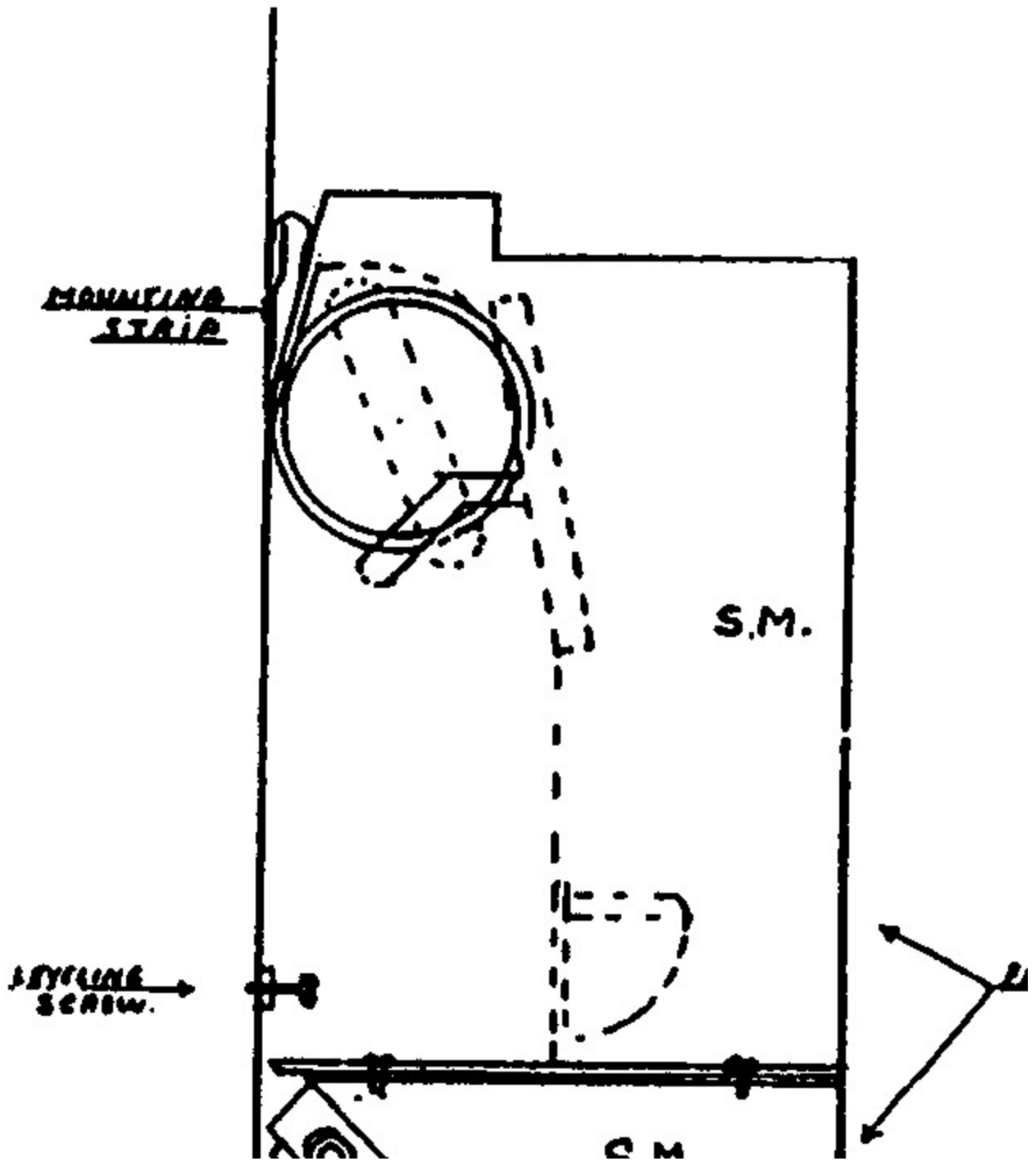
By: Edward Carrough
FOR THE SHEET METAL WORKERS INTERNATIONAL
ASSOCIATION

CONVECTOR COVERS WHICH ARE FOR CONTINUOUS, WALL TO WALL, OR PILASTER TO PILASTER.

Top and Front = Sheet Metal Workers
S.M. Back with Coil Hangers attached = Composite Crew
S.M. Back without Coil Hangers attached = Sheet Metal Workers
Unattached Hangers for Coil and Piping = U. A.



HIGH PRESSURE UNIT



December 22, 1958

**TO ALL GENERAL VICE PRESIDENTS, GENERAL
ORGANIZERS, SPECIAL REPRESENTATIVES,
FINANCIAL SECRETARIES AND BUSINESS
MANAGERS OF LOCAL UNIONS OF THE
UNITED ASSOCIATION**

Dear Sits and Brothers:

In the period since the Agreement between the Sheet Metal Workers' International Association and the United Association of Journeymen and Apprentices of the Plumbing and Pipe Fitting Industry of the United States and Canada it has been determined that some addition should be made to cover the installation of gas fired wall heaters.

On the opposite side of this page will be found an addition to the Agreement between the Sheet Metal Workers' International Association and the United Association of Journeymen and Apprentices of the Plumbing and Pipe Fitting Industry covering the installation of gas fired wall heaters.

Please see that the provisions of this addition are put into effect in your area. \

With best wishes, I am

Fraternally yours,

/S/ PETER T. SCHOEMANN

General President, U.A.

**ADDITION TO AGREEMENT BETWEEN THE UNITED ASSOCIATION AND SHEET METAL WORKERS'
INTERNATIONAL ASSOCIATION COVERING THE INSTALLATION OF WALL HEATERS**

The installation of wall heaters which serve a single room and which have no connections to duct work is the work of the members of the United Association. "is includes the installation of burners, fuel lines or any other pipe work in connection therewith; the venting of this type heater is the work of the members of the Sheet Metal Workers' International Association.

In instances where a wall heater is placed in a central position, is the only source of heat for the entire house, building

or apartment then such a heater will be considered as a furnace and the installation shall be by the Sheet Metal Worker. All gas piping is the work of the United Association.

The installation and venting of wall heaters that have outlets and connections to duct work is the work of members of the Sheet Metal Workers' International Association. The installation of burners, fuel lines and any other pipe in connection with the installation is the work of the members of the United Association.

It is understood that if heating element or burner comes attached to unit that it shall be installed by trade having jurisdiction in accordance with Paragraphs 1, 2 and 3.

Signed this 22nd day of December, 1958.

/s/ JOHN J. MCCARTIN

UNITED ASSOCIATION OF JOURNEYMEN AND APPRENTICES OF THE PLUMBING AND PIPE FITTING INDUSTRY OF THE UNITED STATES AND CANADA

/s/ EDWARD CARLOUGH

SHEET METAL WORKERS' INTERNATIONAL ASSOCIATION

ADDENDUM TO ARTICLE 1, Sec. (I)a and (I)b

AGREEMENT OF AUGUST 31, 1956

BETWEEN UNITED ASSOCIATION OF

JOURNEYMEN AND APPRENTICES OF THE

PLUMBING AND PIPE FITTING INDUSTRY

AND SHEET METAL WORKERS

INTERNATIONAL ASSOCIATION

Completed package type gas or oil fired roof units, consisting of heater, fans, filters, dampers, etc., for heating purposes only are not covered by Article 1, Sec. (I)a and b of the Agreement and shall be handled by a composite crew.

Knock down gas or oil fired roof type units for heating purposes only shall be handled by a composite crew.

Duct work in connection with above shall be the work of Sheet Metal Workers.

Pipe work in connection with above shall be the Work of the United Association.

SM-16

Gas or oil fired unit heaters within a building for heating purposes only and not in connection with a duct system are covered by Sec. (I)a of the Agreement. Directional ells or nozzles on discharge side of unit are not considered a duct system.

Gas or oil fired unit heaters within a building for heating purposes only in connection with a duct system (duct system is any air handling duct in connection with or attached thereto other than directional ells or nozzles) are covered by Sec. (I)b of the Agreement.

/s/ PETER T. SCHOEMANN

General President,

United Association of Journeymen and Apprentices of the Plumbing and Pipe Fitting Industry.

/s/ EDWARD CARLOUGH

General President,

Sheet Metal Workers International Association.

April 5, 1966

DECISIONS OF RECORD

(Green Book)

SHEET METAL WORKERS'

INTERNATIONAL ASSOCIATION

AND

UNITED ASSOCIATION OF JOURNEYMEN

PLUMBERS AND STEAM FITTERS

AGREEMENT

Indianapolis, Ind.

January 28, 1928

Report of the Committees appointed by the United Association of Journeymen Plumbers and Steam Fitters and the Sheet Metal Workers' International Association, to take up the matter of sheet lead in building construction.

This Committee met at Hotel Severin, Indianapolis, Ind., Friday, January 27, 1928, with the following representatives in attendance: Wm. Lynn, George Masterton and Bert Stephenson, representing the United Association of Plumbers and Steam Fitters, and James Lennon, Richard Pattison and James T. Moriarty, representing the Sheet Metal Workers' International Association.

SM-17

The Committee organized with Wm. Lynn, Chairman; James T. Moriarty, Secretary. The Committee was visited by Robert Fox, Local Agent of the Plumbers, and Charles Wilson, Local Agent of the Sheet Metal Workers. After hearing both agents, the Committee went into executive session and after holding several meetings, reached the following agreement:

"Sheet lead work used in roofing, gutters, valleys, flashings in connection with roofing, and ducts in direct connection with ventilation systems shall be the work of the Sheet Metal Workers, members of the Sheet Metal Workers' International Association. All other sheet lead work including roof flashings in connection with plumbing, shall be the work of the Plumbers, members of the United Association of Journeymen Plumbers and Steam Fitters."

We, the undersigned committee, recommend that this agreement shall go into effect when approved and signed by the International Presidents of the above organizations.

/s/ Wm. LYNN

/s/ GEORGE MASTERTON

/s/ BERT STEPHENSON

Representing United

Association of Journeymen

Plumbers and Steam Fitters

/S/ JOHN COEFIELD

General President

/s/ JAMES LENNON

/s/ R. PATTISON

/S/ JAMES T. MORIARTY

Representing Sheet Metal

Workers' International

Association

/s/ JOHN J. HYNES

General President

SM-18

AIR COOLERS, AIR WASHERS AND BLOWERS,

CONSISTING OF THE ASSEMBLING OF SHEET

METAL AND PIPE FITTING

DECISION RENDERED MARCH 11. 1920

(Subject of dispute between the Amalgamated Sheet Metal Workers' International Alliance and the United Association of Plumbers and Steamfitters.)

The following agreement between the Amalgamated Sheet Metal Workers' International Alliance and the United Association of Plumbers and Steamfitters was confirmed:

September 9, 1918

The undersigned committee, appointed by the General Presidents of their respective International Organizations namely, the United Association of Plumbers, Steamfitters and Steamfitters' Helpers and the Amalgamated Sheet Metal Workers' International Alliance, held joint conferences in the City of New York, beginning September 5, 1918, in an endeavor to arrive at an agreement concerning air washers, fans, blowers, the housing of same, and the pipe fitting on same.

After lengthy meetings participated in by all of the undersigned, representing the Joint Conference Committee of both International Unions, the following has been agreed to:

Section 1. That all sheet metal work of No. 10 gauge. or lighter, when used in air washers, fans, blowers, or on the housing of same, shall be recognized as being the work of the members of the Amalgamated Sheet Metal Workers' International Alliance.

Sec. 2. That all pipe fitting in connection with the above first section shall be recognized as being the work of the Steamfitters, members of the United Association of Journeymen Plumbers, Steamfitters and Steamfitters' Helpers.

Sec. 3. It being thoroughly understood by all of the undersigned that all the assembling and erecting of the work as defined in Section One, shall be the work of the members of the Sheet Metal Workers' International Alliance, excepting pipe fitting of all kinds, which shall be the work of the Steamfitters and Steamfitters' Helpers of the United Association.

SM-19

Sec. 4. This agreement shall become effective and in full operation for all parties concerned beginning November 1, 1918.

Signed for Sheet Metal Workers this 9th day of September, 1918:

JAMES LENNON, Gen. Org.

R. PATTISON, Chairman

W. M. O'BRIAN, Secretary

Wm. H. LYONS

THOS. WALSH

EDW. P. O'NEIL

Signed for United Association:

E. W. LEONARD, Gen. Org.

CHARLES M. RAU

RICHARD P. WALSH

A. P. JOHNSON

LEO A. MURPHY

DECISION OF JOINT BOARD NO. 3

**BEER LINES, WORT LINES, YEAST LINES, CO,
LINES, AND REFRIGERATION IN CONNECTION
WITH ATTEMPERATOR TANKS**

AUGUST 20, 1948

Dispute between the United Association of Journeymen and Apprentices of the Plumbing and Pipe Fitting Industry of the United States and Canada and the Sheet Metal Workers' International Association.

The issue in dispute is the installation of copper piping in breweries for beer lines, wort lines, yeast lines, C02 lines, and refrigeration in connection with attemperator tanks.

After carefully considering all of the evidence and argument as presented by both sides, the Joint Board decides as follows:

The installation of streamlined or other manufactured copper pipe or fittings for beer lines, wort lines, yeast lines, C02 lines is the work of the United Association of Journeymen and Apprentices of the Plumbing and Pipe Fitting Industry of the United States and Canada. The installation of copper

SM-20

attemperator coils in the interior of tanks and vats in breweries is the work of the Coppersmiths, members of the Sheet Metal Workers' International Association.

The decision of the Joint Board is unanimous.

WM. J. MCSORLEY

HARRY C. BATES

ARTHUR H. WELLS

A. HERRMANN WILSON

JOHN T. DUNLOP, Chairman

INDEX

[\[Return to Jurisdiction Manual Intro\]](#) [\[Asbestos Workers\]](#) [\[Boilermakers\]](#)
[\[Bricklayers\]](#) [\[Carpenters\]](#) [\[Electrical Workers\]](#) [\[Elevator Constructors\]](#)
[\[Iron Workers\]](#) [\[Laborers\]](#) [\[Machinists\]](#) [\[Operating Engineers\]](#)
[\[Painters\]](#) [\[General\]](#)